

For Lease | Industrial Land

Veterans Memorial Hwy & Knickerbocker Ave, Holbrook, NY
(Southwest Corner)

LAND LEASE or BUILD TO SUIT LEASE



Lot Size: 1.37 Acres
Frontage: 170' On Veterans Hwy
Zoning: Industrial Corridor District (ICD)
Township: Islip

- Sect 174 - Block 2 - Lot 8.1
- Cleared and Level
- 2 Blocks From Entrance to Islip MacArthur Airport
- Ideal for Office, Industrial with Showroom Exposure, Bank, Funeral Home, Day Care, School, Health Club
- Daily Average Traffic Count 31,031

Land Lease Price: \$200,000.00 Year Net of Real Estate Taxes

BTS Lease Price: TBD By Project

Approx. Taxes: \$13,604.99

METRO

REALTY SERVICES LLC

201 Moreland Road, Ste 4, Hauppauge, NY 11788

(631) 770-0700 ~ info@metrorealtyservices.com

www.metrorealtyservices.com

Exclusive Agent:

Jeremy D. Hackett
Licensed Real Estate Broker
Managing Partner

Direct: (631) 391-6359

jeremy@metrorealtyservices.com

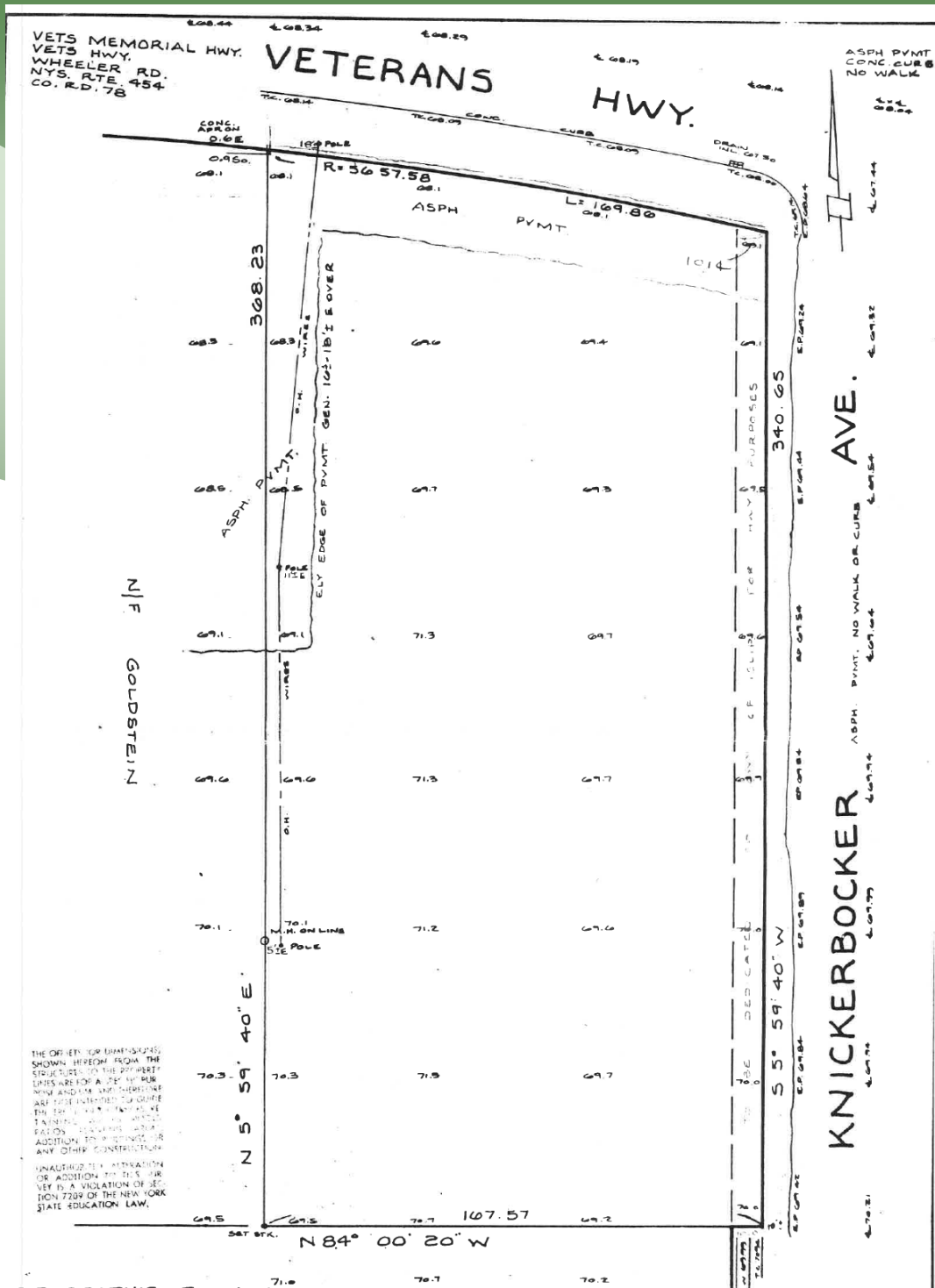
Exclusive Agent:

Nicholas Romano
Licensed Real Estate Broker
Managing Partner

Direct: (631) 391-6362

nick@metrorealtyservices.com

For Lease | Industrial Land
 Veterans Memorial Hwy & Knickerbocker Ave, Holbrook, NY
 (Southwest Corner)



201 Moreland Road, Ste 4, Hauppauge, NY 11788
 (631) 770-0700 ~ info@metrorealtyservices.com
 www.metrorealtyservices.com

Exclusive Agent:

Jeremy D. Hackett
 Licensed Real Estate Broker
 Managing Partner
 Direct: (631) 391-6359
jeremy@metrorealtyservices.com

Exclusive Agent:

Nicholas Romano
 Licensed Real Estate Broker
 Managing Partner
 Direct: (631) 391-6362
nick@metrorealtyservices.com