

For Sale | Industrial

90 Remington Blvd, Ronkonkoma, NY 11779



Building Size: 8,000 sf ±
Lot Size: 0.58 acres ±
Offices: 2,000 sf ±
Ceiling Height: 19' ±
Drive-Ins: 2 (14' x 12' doors)
Docks: 1
Heat: Gas
Power: 1,600 amps
Sec-Block-Lot: 125- 1 - 12.024
Zoning: Industrial 1

- Fenced in yard
- Front facing loading dock
- Just off Vets Hwy
- Town of Islip

Sale Price: \$ 2,600,000
Taxes: \$ 23,332.17 / year ±

METRO

REALTY SERVICES LLC

201 Moreland Road, Ste 4, Hauppauge, NY 11788

(631) 770-0700 ~ info@metrorealtyservices.com

www.metrorealtyservices.com

Exclusive Agent:

Jeremy D. Hackett

Licensed Real Estate Broker

Managing Partner

Cell: [\(516\) 456-0108](tel:5164560108)

jeremy@metrorealtyservices.com

For Sale | Industrial
90 Remington Blvd, Ronkonkoma, NY 11779



METRO

REALTY SERVICES LLC

201 Moreland Road, Ste 4, Hauppauge, NY 11788

(631) 770-0700 ~ info@metrorealtyservices.com

www.metrorealtyservices.com

Exclusive Agent:

Jeremy D. Hackett

Licensed Real Estate Broker

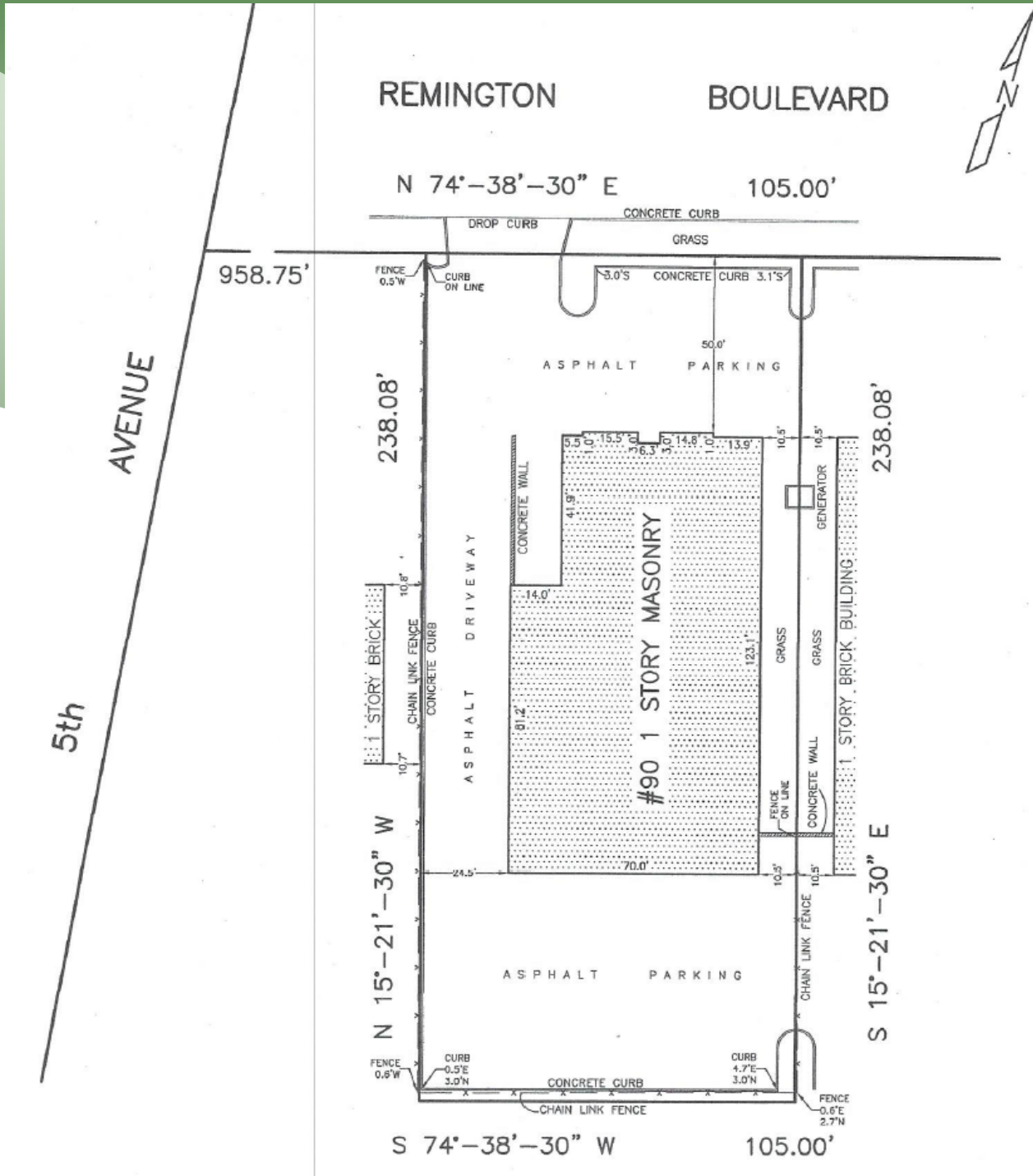
Managing Partner

Cell: [\(516\) 456-0108](tel:5164560108)

jeremy@metrorealtyservices.com

All information submitted is subject to errors, omissions, change of price or rental, change of other terms and conditions, prior sale, lease, financing or withdrawal without notice. All areas and dimensions are approximate. This advertisement does not suggest that the broker has a listing on this property or properties or that any property is currently available.

For Sale | Industrial
 90 Remington Blvd, Ronkonkoma, NY 11779



METRO

REALTY SERVICES LLC

201 Moreland Road, Ste 4, Hauppauge, NY 11788

(631) 770-0700 ~ info@metrorealtyservices.com

www.metrorealtyservices.com

Exclusive Agent:

Jeremy D. Hackett

Licensed Real Estate Broker

Managing Partner

Cell: (516) 456-0108

jeremy@metrorealtyservices.com