

# For Lease | Industrial

## 750 Blue Point Rd, Holtsville, NY 11742



Building Size: 15,000 sf ±  
Lot Size: 2.00 acres ±  
R&D: 9,000 sf ±  
Offices: 3,500 sf ±  
Ceiling Height: 16' ±  
Drive-Ins: 2  
Docks: 1  
Heat: Gas  
Power: 800 amps ±

- Divisions Considered
- Occupancy TBD
- Sprinklers
- 90% Air Conditioned
- Free Standing Building

**Ideal for R&D / Heavy Office Company**

Lease Price: \$18.00 psf gross

# METRO

REALTY SERVICES LLC

201 Moreland Road, Ste 4, Hauppauge, NY 11788

(631) 770-0700 ~ [info@metrorealtyservices.com](mailto:info@metrorealtyservices.com)

[www.metrorealtyservices.com](http://www.metrorealtyservices.com)

### **Exclusive Agent:**

Jeremy D. Hackett

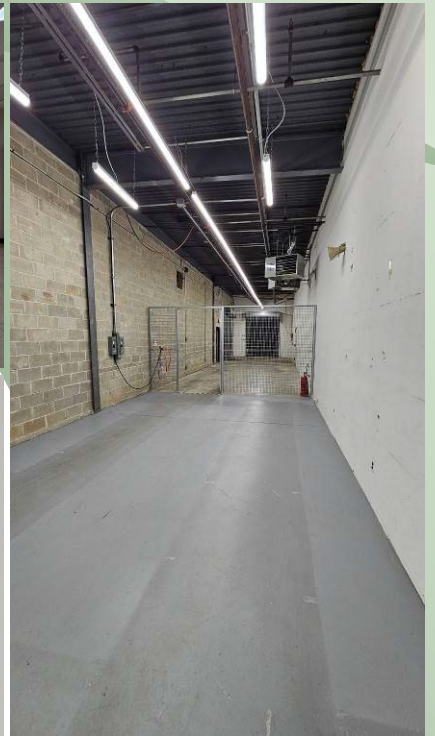
Licensed Real Estate Broker

Managing Partner

Cell: [\(516\) 456-0108](tel:5164560108)

[jeremy@metrorealtyservices.com](mailto:jeremy@metrorealtyservices.com)

For Lease | Industrial  
750 Blue Point Rd, Holtsville, NY 11742



**METRO**  
REALTY SERVICES LLC

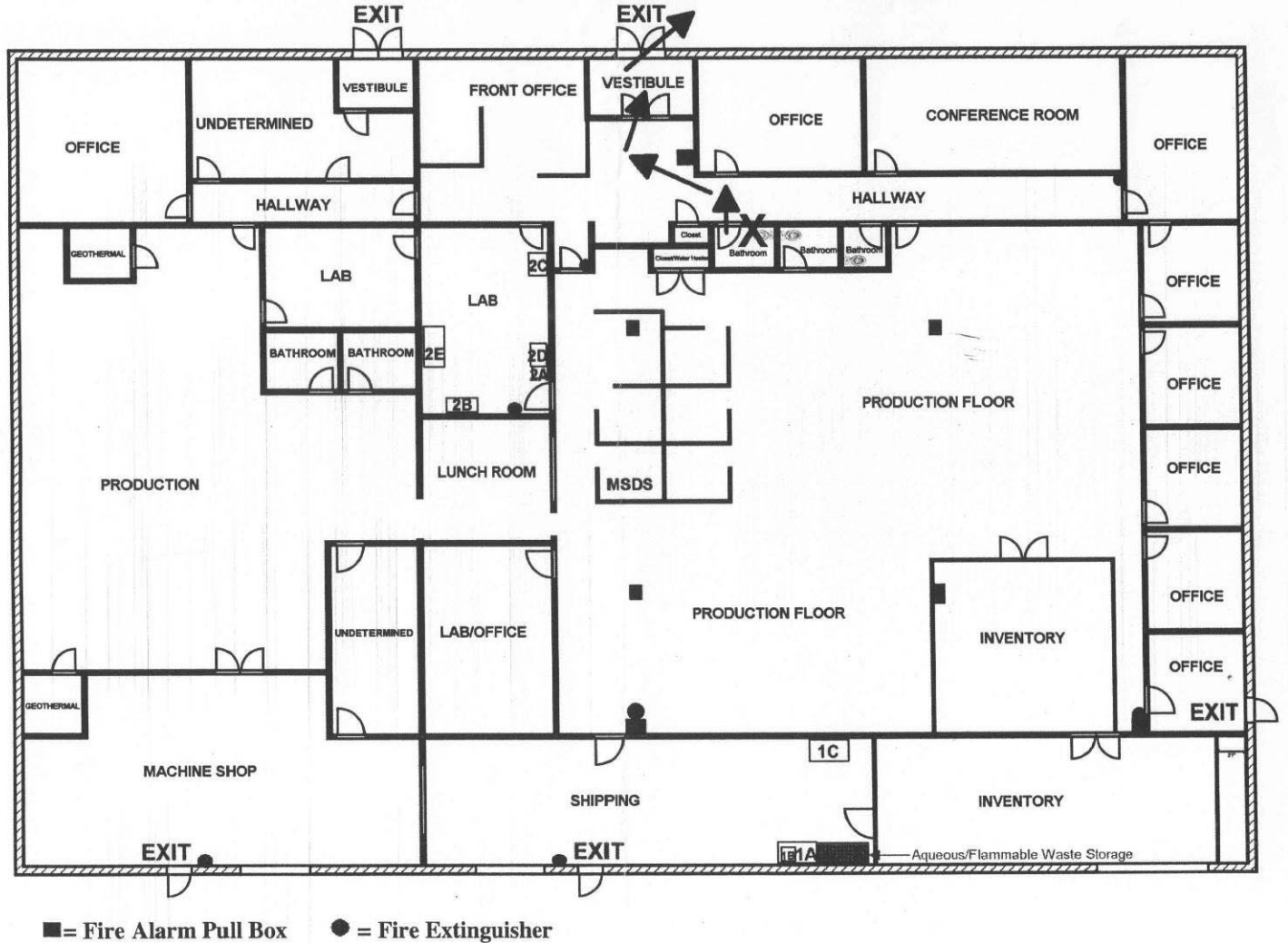
201 Moreland Road, Ste 4, Hauppauge, NY 11788  
(631) 770-0700 ~ [info@metrorealtyservices.com](mailto:info@metrorealtyservices.com)  
[www.metrorealtyservices.com](http://www.metrorealtyservices.com)

**Exclusive Agent:**

Jeremy D. Hackett  
Licensed Real Estate Broker  
Managing Partner  
Cell: [\(516\) 456-0108](tel:5164560108)  
[jeremy@metrorealtyservices.com](mailto:jeremy@metrorealtyservices.com)

All information submitted is subject to errors, omissions, change of price or rental, change of other terms and conditions, prior sale, lease, financing or withdrawal without notice. All areas and dimensions are approximate. This advertisement does not suggest that the broker has a listing on this property or properties or that any property is currently available.

For Lease | Industrial  
750 Blue Point Rd, Holtsville, NY 11742



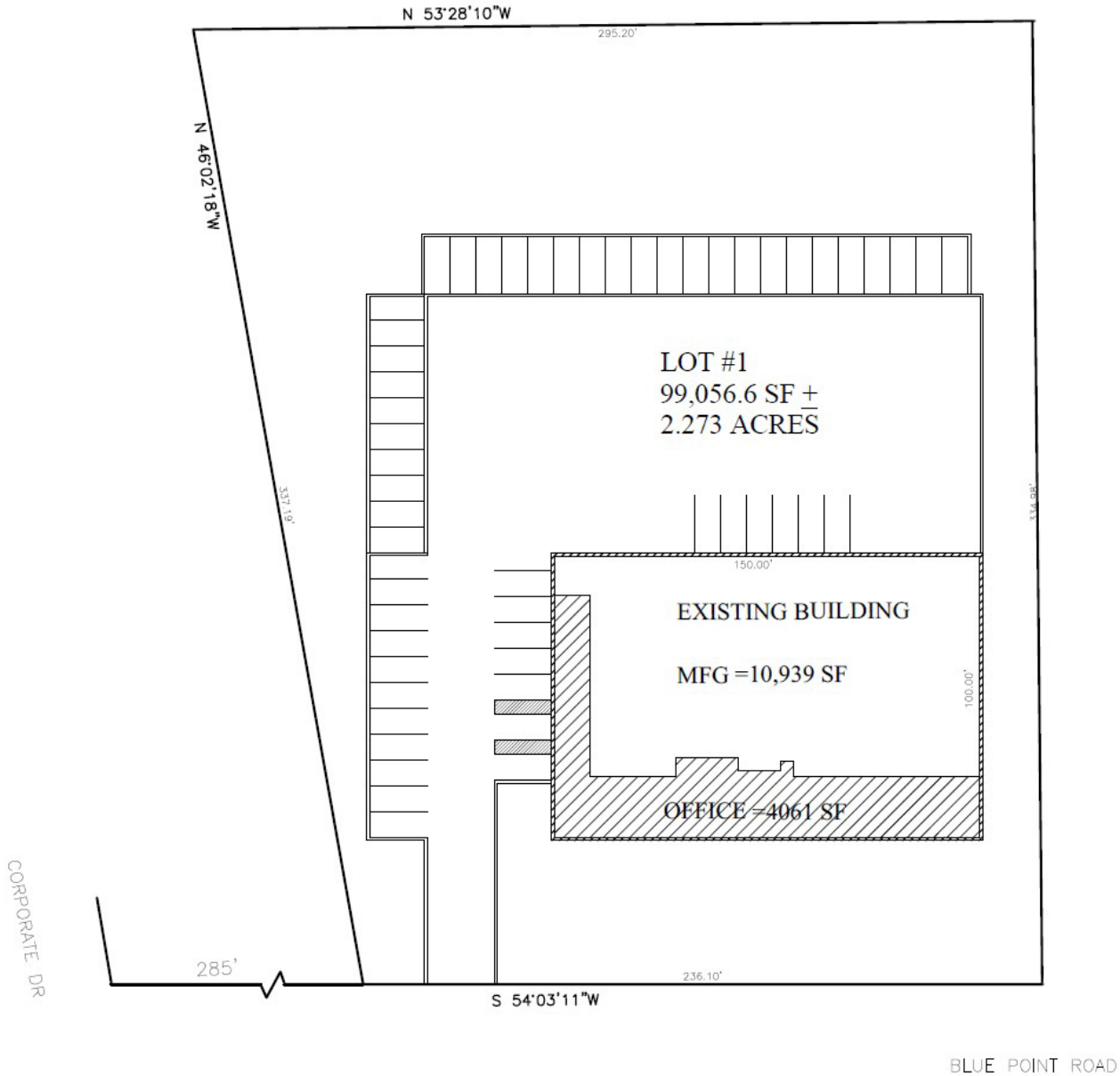
201 Moreland Road, Ste 4, Hauppauge, NY 11788  
(631) 770-0700 ~ [info@metrorealtyservices.com](mailto:info@metrorealtyservices.com)  
[www.metrorealtyservices.com](http://www.metrorealtyservices.com)

**Exclusive Agent:**

Jeremy D. Hackett  
Licensed Real Estate Broker  
Managing Partner  
Cell: [\(516\) 456-0108](tel:5164560108)  
[jeremy@metrorealtyservices.com](mailto:jeremy@metrorealtyservices.com)

# For Lease | Industrial

750 Blue Point Rd, Holtsville, NY 11742



**METRO**

REALTY SERVICES LLC

201 Moreland Road, Ste 4, Hauppauge, NY 11788

(631) 770-0700 ~ [info@metrorealtyservices.com](mailto:info@metrorealtyservices.com)

[www.metrorealtyservices.com](http://www.metrorealtyservices.com)

## **Exclusive Agent:**

Jeremy D. Hackett

Licensed Real Estate Broker

Managing Partner

Cell: [\(516\) 456-0108](tel:5164560108)

[jeremy@metrorealtyservices.com](mailto:jeremy@metrorealtyservices.com)