

For Lease | Industrial Land  
47-49 Whitson St & 48 Sewell St, Hempstead, NY

**Price Reduced**



30,000 sf (Divisible)

Fully Fenced

3 Street Access (4 Openings)

Electric On Site

- Just Off Peninsula Blvd
- Outdoor Storage
- Highly Secure Fencing
- Corner's of Whitson St & Mirschel St and Sewell St & Mirschel St
- Divisions of 14,000 sf / 16,000 sf (will consider smaller)
- 2 Tax Lots
- Concrete Lot

Asking Lease Price: ~~\$10.00~~ \$9.75 psf (Division's at premium)

SALE OFFERS CONSIDERED

**METRO**

REALTY SERVICES LLC

201 Moreland Road, Ste 4, Hauppauge, NY 11788

(631) 770-0700 ~ [info@metrorealtyservices.com](mailto:info@metrorealtyservices.com)

[www.metrorealtyservices.com](http://www.metrorealtyservices.com)

**Exclusive Agent:**

Jeremy D. Hackett

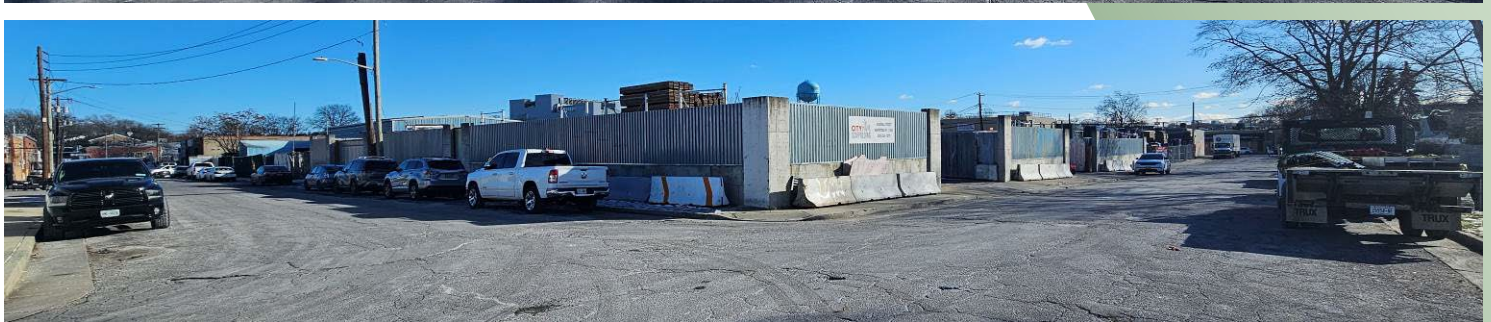
Licensed Real Estate Broker

Managing Partner

Cell: [\(516\) 456-0108](tel:5164560108)

[jeremy@metrorealtyservices.com](mailto:jeremy@metrorealtyservices.com)

# For Lease | Industrial Land 47-49 Whitson St & 48 Sewell St, Hempstead, NY



# METRO

REALTY SERVICES LLC

201 Moreland Road, Ste 4, Hauppauge, NY 11788

(631) 770-0700 ~ [info@metrorealtyservices.com](mailto:info@metrorealtyservices.com)

[www.metrorealtyservices.com](http://www.metrorealtyservices.com)

## **Exclusive Agent:**

Jeremy D. Hackett

Licensed Real Estate Broker

Managing Partner

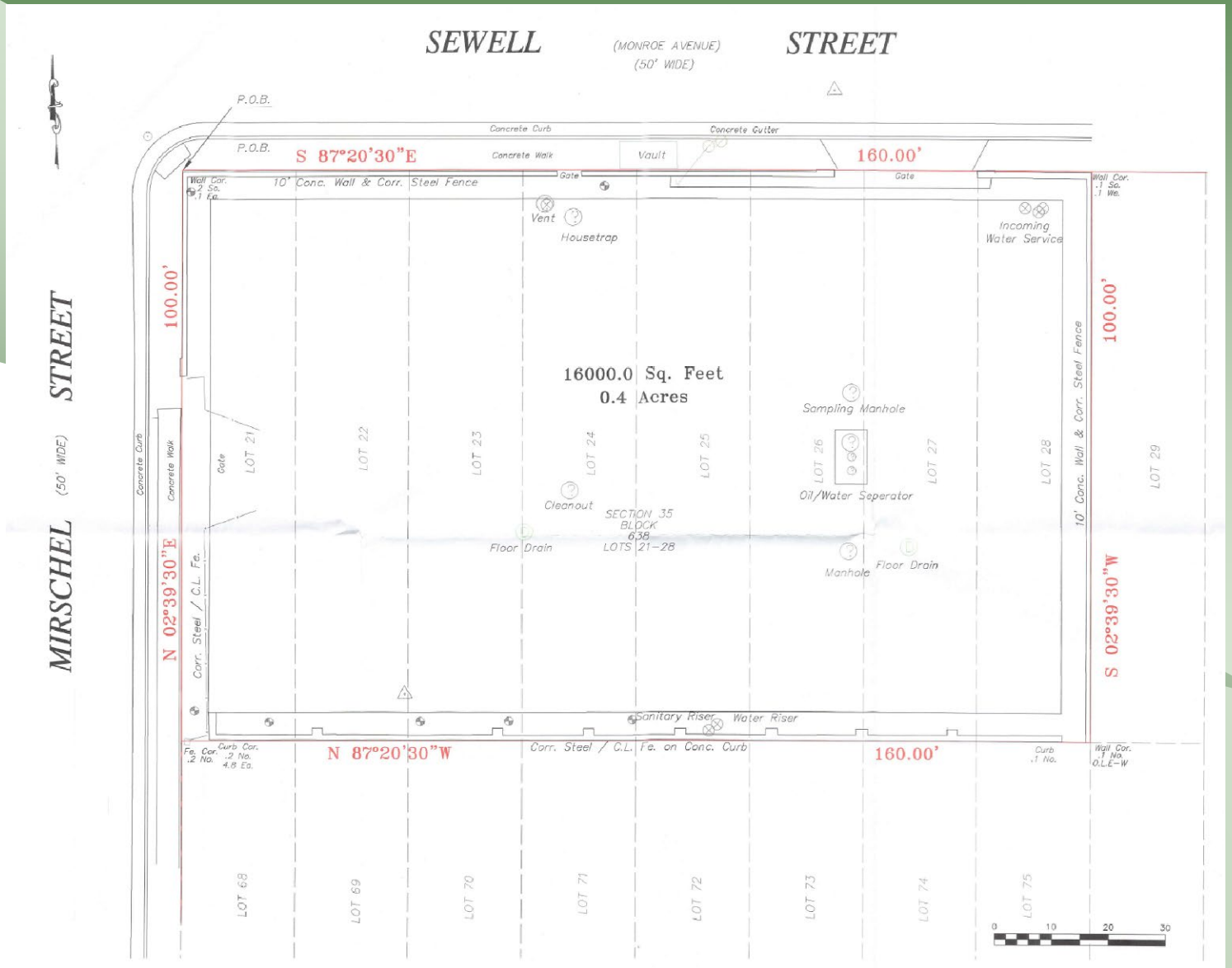
Cell: [\(516\) 456-0108](tel:5164560108)

[jeremy@metrorealtyservices.com](mailto:jeremy@metrorealtyservices.com)

All information submitted is subject to errors, omissions, change of price or rental, change of other terms and conditions, prior sale, lease, financing or withdrawal without notice. All areas and dimensions are approximate. This advertisement does not suggest that the broker has a listing on this property or properties or that any property is currently available.

Created/Revised:  
01/17/2025

# For Lease | Industrial Land 47-49 Whitson St & 48 Sewell St, Hempstead, NY



# METRO

REALTY SERVICES LLC

201 Moreland Road, Ste 4, Hauppauge, NY 11788

(631) 770-0700 ~ [info@metrorealtyservices.com](mailto:info@metrorealtyservices.com)

[www.metrorealtyservices.com](http://www.metrorealtyservices.com)

## **Exclusive Agent:**

Jeremy D. Hackett

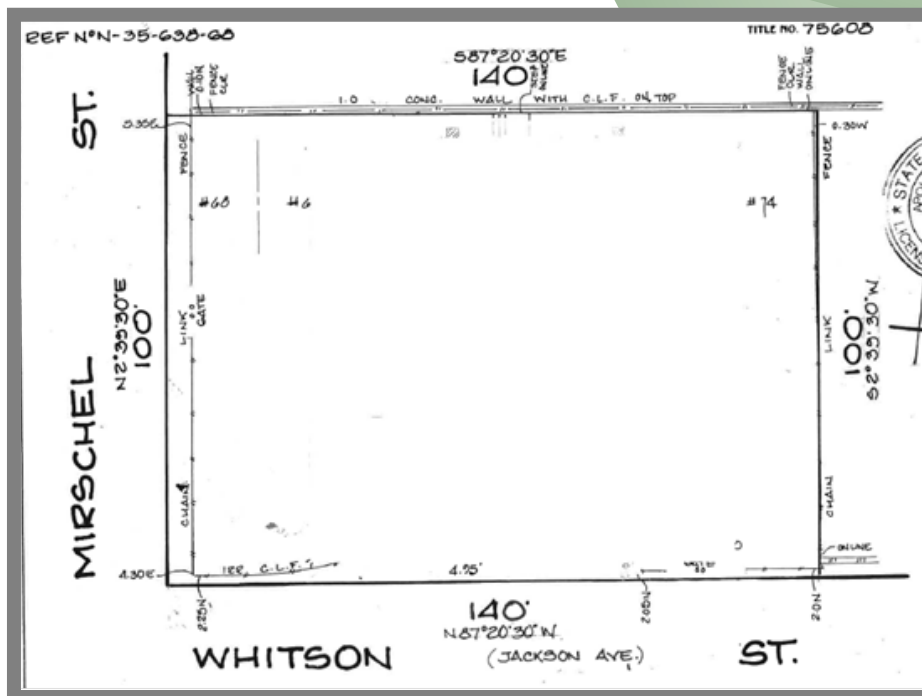
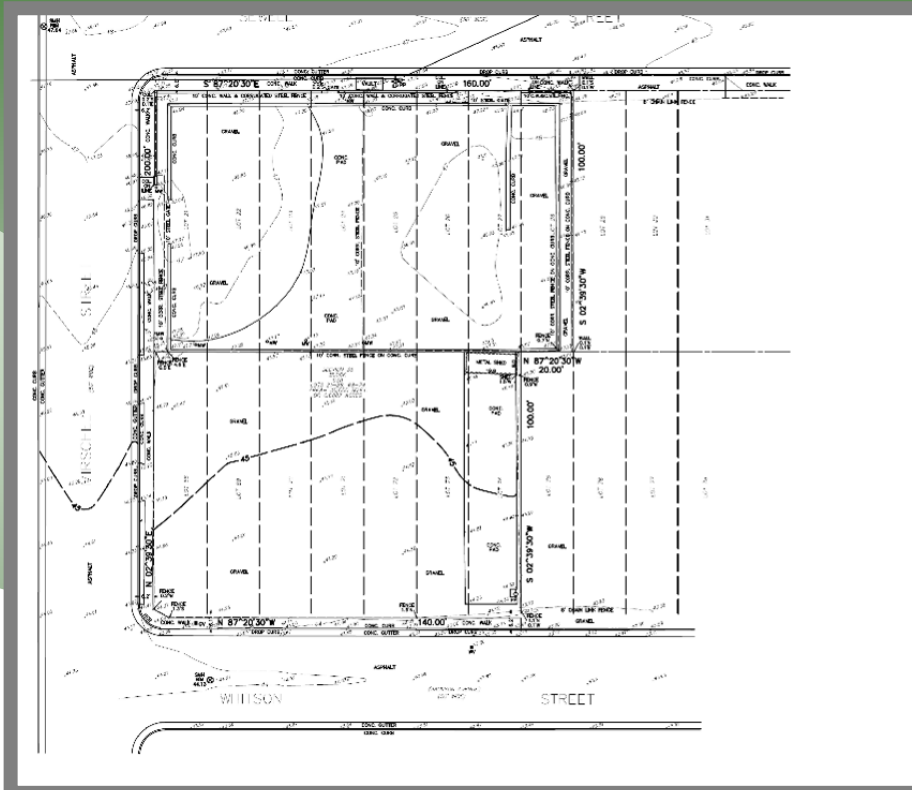
Licensed Real Estate Broker

Managing Partner

Cell: [\(516\) 456-0108](tel:(516)456-0108)

[jeremy@metrorealtyservices.com](mailto:jeremy@metrorealtyservices.com)

# For Lease | Industrial Land 47-49 Whitson St & 48 Sewell St, Hempstead, NY



# METRO

REALTY SERVICES LLC

201 Moreland Road, Ste 4, Hauppauge, NY 11788

(631) 770-0700 ~ [info@metrorealtyservices.com](mailto:info@metrorealtyservices.com)

[www.metrorealtyservices.com](http://www.metrorealtyservices.com)

## Exclusive Agent:

Jeremy D. Hackett

Licensed Real Estate Broker

Managing Partner

Cell: [\(516\) 456-0108](tel:(516)456-0108)

[jeremy@metrorealtyservices.com](mailto:jeremy@metrorealtyservices.com)