

For Lease | Industrial

120 Toledo St, Farmingdale, NY



Building Size: 2,080 sf ±
Lot Size: .12 acres ±
Offices: 1,600 sf ±
Ceiling Height: 11' 6"
Loading: 1 Drive-In (10' x 10')
Heat: Gas
Power: 200 amps ±
Age: Built in 1966
Zoned: Industrial G

Lease Price: \$ 4,000 / month gross

- Freestanding Building
- Small fenced in area (± 55' x 27')
- Office fully air conditioned
- 2 Bathrooms
- Kitchen
- Fully Alarmed
- 20' Container included
- Sewers

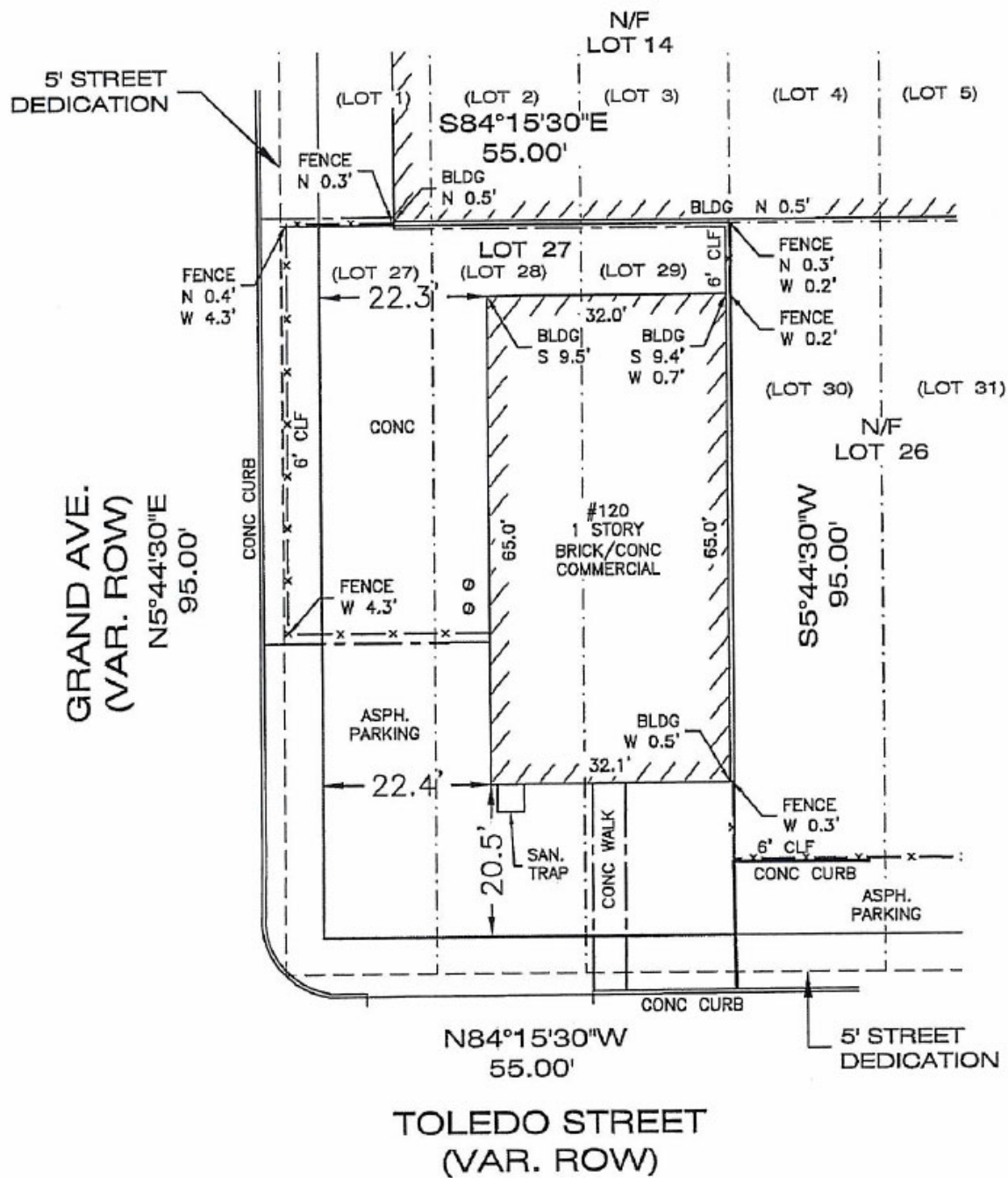
METRO
REALTY SERVICES LLC

201 Moreland Road, Ste 4, Hauppauge, NY 11788
(631) 770-0700 ~ info@metrorealtyservices.com
www.metrorealtyservices.com

Exclusive Agent:

Jeremy D. Hackett
Licensed Real Estate Broker
Managing Partner
Direct: (631) 391-6359
jeremy@metrorealtyservices.com

For Lease | Industrial
 120 Toledo St, Farmingdale, NY



METRO
 REALTY SERVICES LLC

201 Moreland Road, Ste 4, Hauppauge, NY 11788
 (631) 770-0700 ~ info@metrorealtyservices.com
 www.metrorealtyservices.com

Exclusive Agent:

Jeremy D. Hackett
 Licensed Real Estate Broker
 Managing Partner
 Direct: (631) 391-6359
jeremy@metrorealtyservices.com

For Lease | Industrial

120 Toledo St, Farmingdale, NY



METRO
REALTY SERVICES LLC

201 Moreland Road, Ste 4, Hauppauge, NY 11788
(631) 770-0700 ~ info@metrorealtyservices.com
www.metrorealtyservices.com

Exclusive Agent:

Jeremy D. Hackett
Licensed Real Estate Broker
Managing Partner
Direct: (631) 391-6359
jeremy@metrorealtyservices.com

All information submitted is subject to errors, omissions, change of price or rental, change of other terms and conditions, prior sale, lease, financing or withdrawal without notice. All areas and dimensions are approximate. This advertisement does not suggest that the broker has a listing on this property or properties or that any property is currently available.