

Available | Industrial |
116 County Courthouse Rd, Garden City Park, NY 11040

REDUCED!



Building Size: 6,500 sf ±
Lot Size: .26 acres ±
Ceiling Height: 12' clear ±
Drive-Ins: 1
Heat: Gas
Power: 400 amps ±



Sale Price: ~~\$2,295,000~~ \$2,195,000
Taxes: \$51,813.00 ±

METRO
REALTY SERVICES LLC

201 Moreland Road, Ste 4, Hauppauge, NY 11788

(631) 770-0700 ~ info@metrorealtyservices.com

www.metrorealtyservices.com

Contact "Exclusive" Agent:

Mark Timpone, Managing Partner
Licensed Real Estate Broker

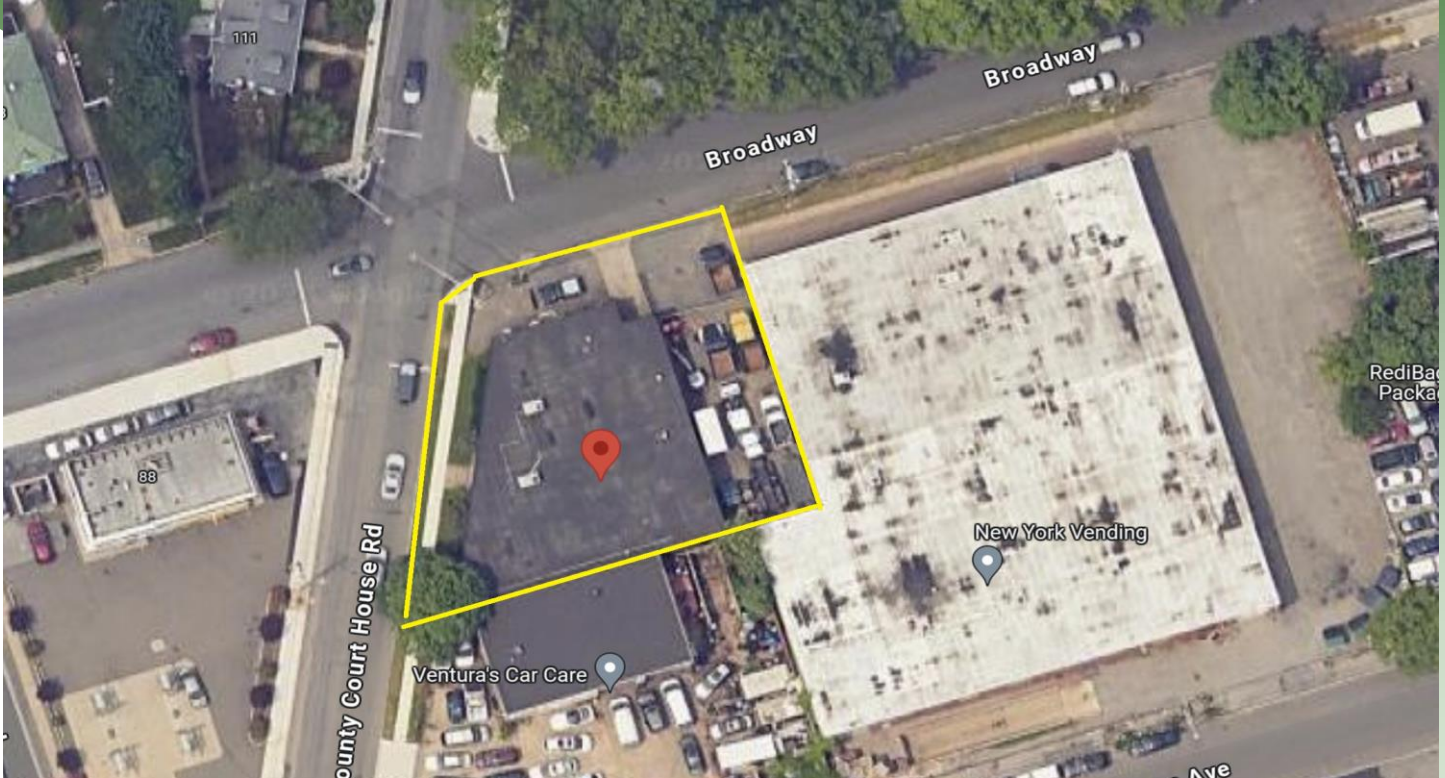
Direct: (516) 375-8069

mark@metrorealtyservices.com

All information submitted is subject to errors, omissions, change of price or rental, change of other terms and conditions, prior sale, lease, financing or withdrawal without notice. All areas and dimensions are approximate. This advertisement does not suggest that the broker has a listing on this property or properties or that any property is currently available.

Available | Industrial |
116 County Courthouse Rd, Garden City Park, NY 11040

REDUCED!



- Full A/C
- Good loading
- Fully sprinklered
- Off street parking / private lot
- Rear yard fenced, lit and secure
- Walk to LIRR Merillon Ave Station
- Corner location / excellent visibility
- Close to NYU Langone Hospital Mineola
- Close to LIJ Northwell / St Francis Hospital
- Just minutes from the Queens border (less than 3 miles)
- Easy access to all points east and west on Long Island & NYC

METRO
REALTY SERVICES LLC

201 Moreland Road, Ste 4, Hauppauge, NY 11788

(631) 770-0700 ~ info@metrorealtyservices.com

www.metrorealtyservices.com

Contact "Exclusive" Agent:

Mark Timpone, Managing Partner
Licensed Real Estate Broker

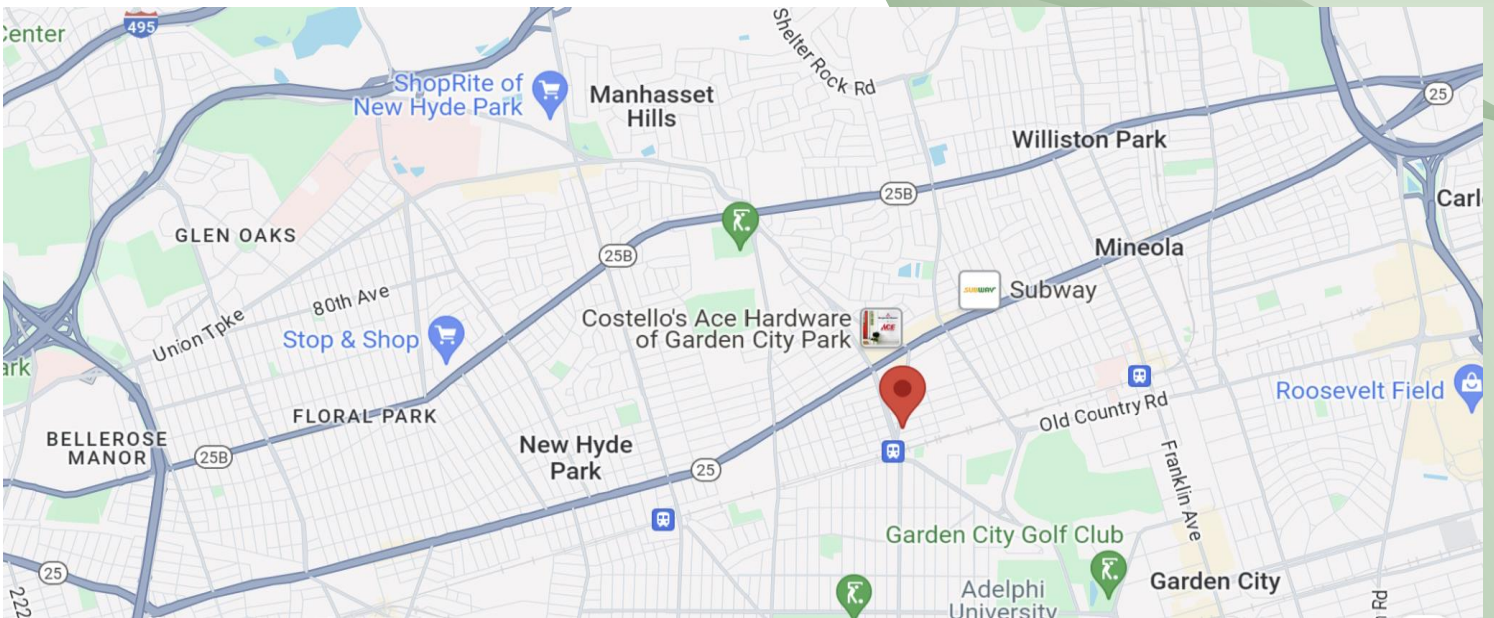
Direct: (516) 375-8069

mark@metrorealtyservices.com

All information submitted is subject to errors, omissions, change of price or rental, change of other terms and conditions, prior sale, lease, financing or withdrawal without notice.
All areas and dimensions are approximate. This advertisement does not suggest that the broker has a listing on this property or properties or that any property is currently available.

Available | Industrial |
116 County Courthouse Rd, Garden City Park, NY 11040

REDUCED!



[Click map to map it.....](#)

METRO
REALTY SERVICES LLC

201 Moreland Road, Ste 4, Hauppauge, NY 11788

(631) 770-0700 ~ info@metrorealtyservices.com

www.metrorealtyservices.com

Contact "Exclusive" Agent:

Mark Timpone, Managing Partner
Licensed Real Estate Broker

Direct: (516) 375-8069

mark@metrorealtyservices.com

All information submitted is subject to errors, omissions, change of price or rental, change of other terms and conditions, prior sale, lease, financing or withdrawal without notice. All areas and dimensions are approximate. This advertisement does not suggest that the broker has a listing on this property or properties or that any property is currently available.