

Available | Cross-dock
1 Imperatore Dr, Old Bethpage, NY

Available Immediately



Location: Long Island (Old Bethpage)
Doors: 64 (exterior)
Office: 5,500 sq. ft. +/-
Height: 16' +/-
Acres: 8.20 +/-
Building: 48,140 sq. ft. +/-
Dock: Dock: 151' x 266' +/-
Shop: 1,800 sq. ft. +/- 1-bay (2 doors)
Yard: Paved, fenced & lighted
Fuel: 10,000-gallon UST

METRO

REALTY SERVICES LLC

201 Moreland Road, Ste 4, Hauppauge, NY 11788

(631) 770-0700 ~ info@metrorealtyservices.com

www.metrorealtyservices.com

Exclusive Agent:

Mark Timpone

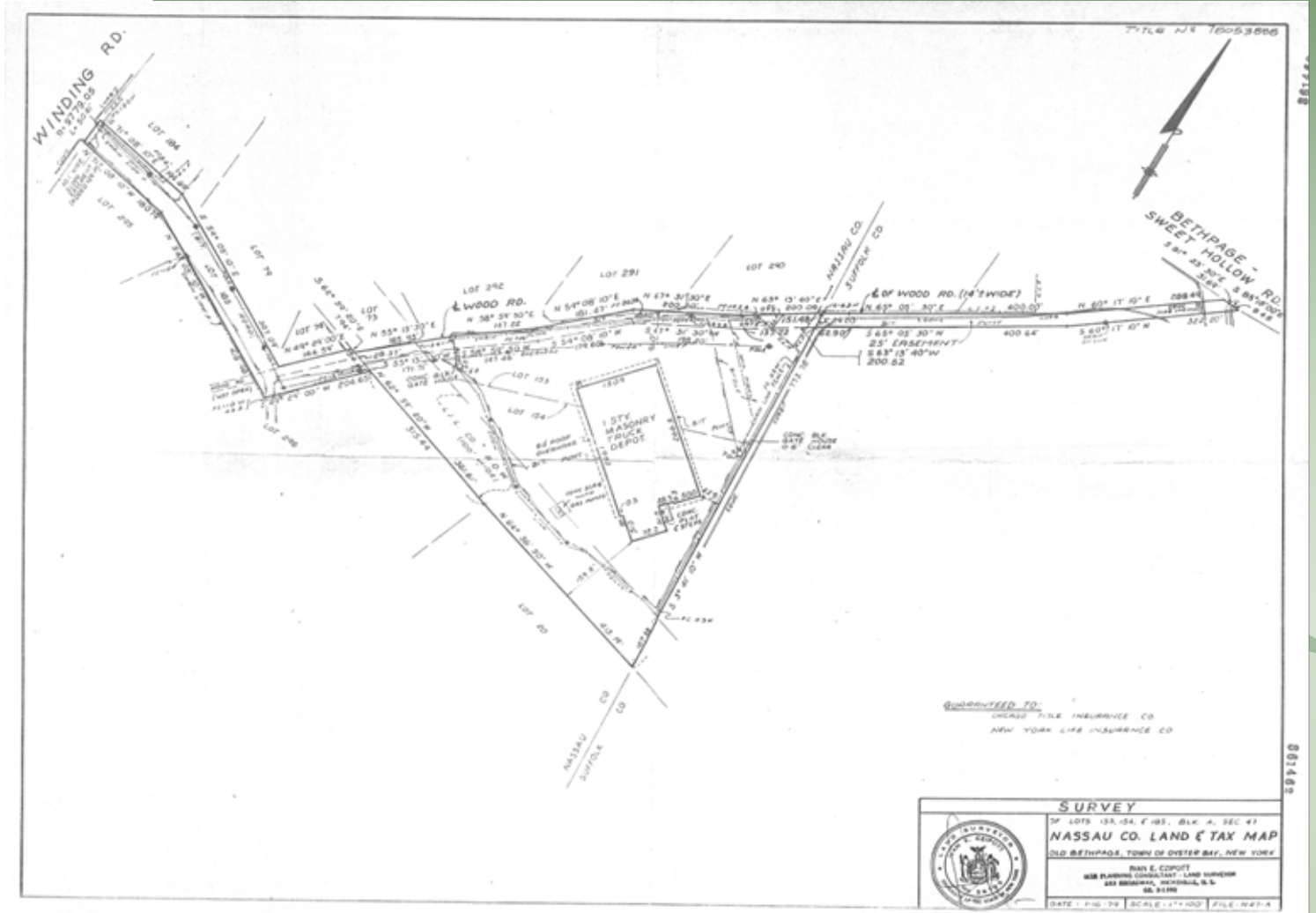
Licensed Real Estate Broker

Managing Partner

Direct: (631) 391-6361

mark@metrorealtyservices.com

Available | Cross-dock 1 Imperatore Dr, Old Bethpage, NY



METRO
REALTY SERVICES LLC

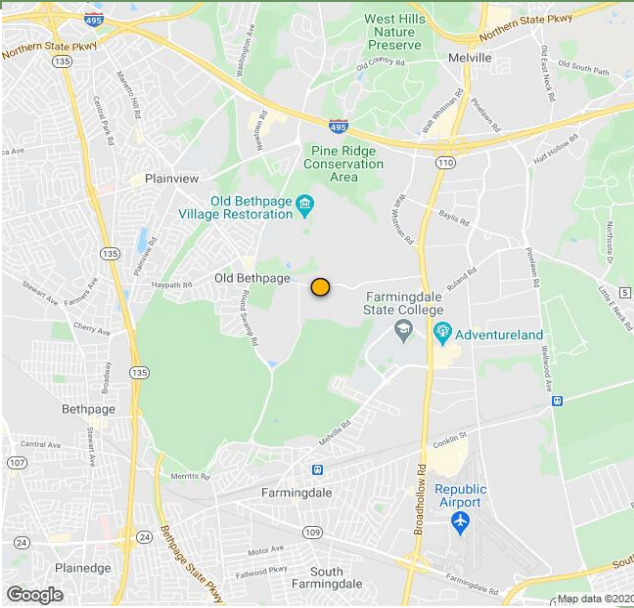
201 Moreland Road, Ste 4, Hauppauge, NY 11788
(631) 770-0700 ~ info@metrorealtyservices.com
www.metrorealtyservices.com

Exclusive Agent:

Mark Timpone
Licensed Real Estate Broker
Managing Partner
Direct: (631) 391-6361
mark@metrorealtyservices.com

All information submitted is subject to errors, omissions, change of price or rental, change of other terms and conditions, prior sale, lease, financing or withdrawal without notice. All areas and dimensions are approximate. This advertisement does not suggest that the broker has a listing on this property or properties or that any property is currently available.

Available | Cross-dock 1 Imperatore Dr, Old Bethpage, NY



[Click map to map it....](#)

Extra Parking

Located just 2.5 miles from the Long Island Expressway this property offer easy access to NYC & all points east and west on Long Island.

Extra Parking: Additional 9 acres available (divisible)

Call for pricing

Lease Price: Please call for details

METRO

REALTY SERVICES LLC

201 Moreland Road, Ste 4, Hauppauge, NY 11788

(631) 770-0700 ~ info@metrorealtyservices.com

www.metrorealtyservices.com

Exclusive Agent:

Mark Timpone

Licensed Real Estate Broker

Managing Partner

Direct: (631) 391-6361

mark@metrorealtyservices.com

All information submitted is subject to errors, omissions, change of price or rental, change of other terms and conditions, prior sale, lease, financing or withdrawal without notice. All areas and dimensions are approximate. This advertisement does not suggest that the broker has a listing on this property or properties or that any property is currently available.